

CIMCO NC-Base v4 Database

Installation instructions

When installing the CIMCO NC-Base Database, please follow the instructions below:

Place the CD-Rom in the CD drive.

Start the installation program

Should the installation process not start automatically, double-click the setup file on the CD-Rom.

Follow the instructions on the screen:

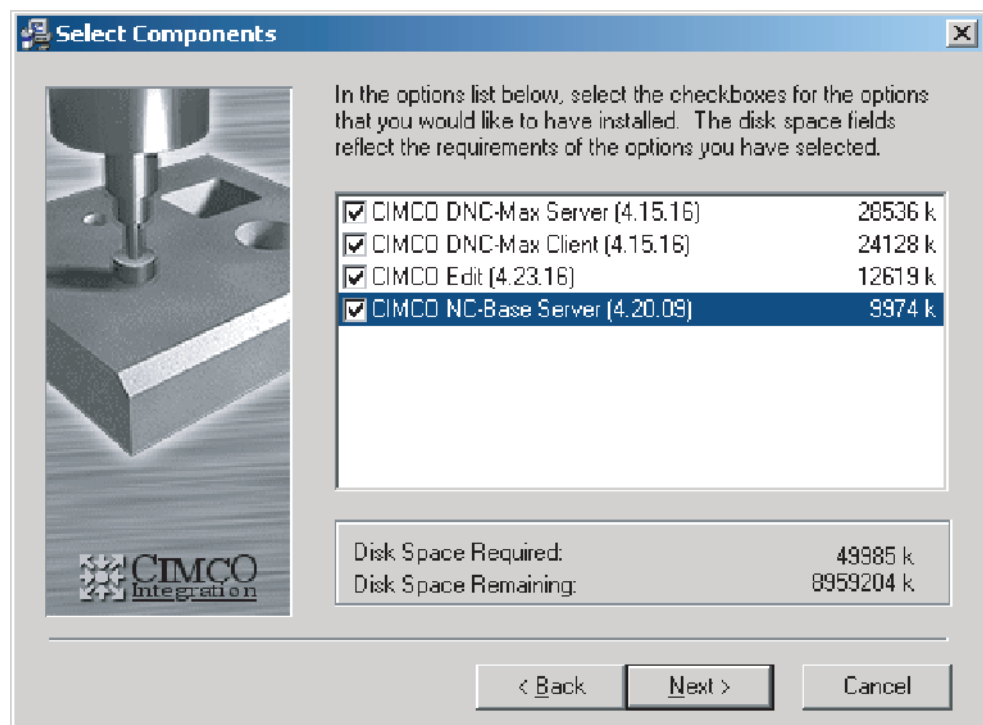
- 1) Select language
- 2) Welcome
- 3) ReadMe file
- 4) Select target path
- 5) Make backup of replaced files

(See next page)

6) Select components:

To install the CIMCO NC-Base Database the following components must be installed:

- 1) CIMCO DNC-Max Server
- 2) CIMCO DNC-Max Client
- 3) CIMCO Edit
- 4) CIMCO NC-Base Server



Check all the components as shown above and click **Next**. Now Cimco Edit and DNC-Max will be installed. Finish this first part of the installation process by following the remaining instructions.

Copy keyfile

If you do not possess a keyfile and merely want to install a test version, just skip this step and go on to next section "To start the NC-Base Server".

After finishing the installation, if you have acquired a keyfile it must be copied into the NCBase4Server and CIMCOEdit4 directories.

To start the NC-Base Server

After the first part of the installation is finished and the keyfile has been copied into the CIMCOEdit4 and NCBase4Server directories, you must start the NC-Base Server:

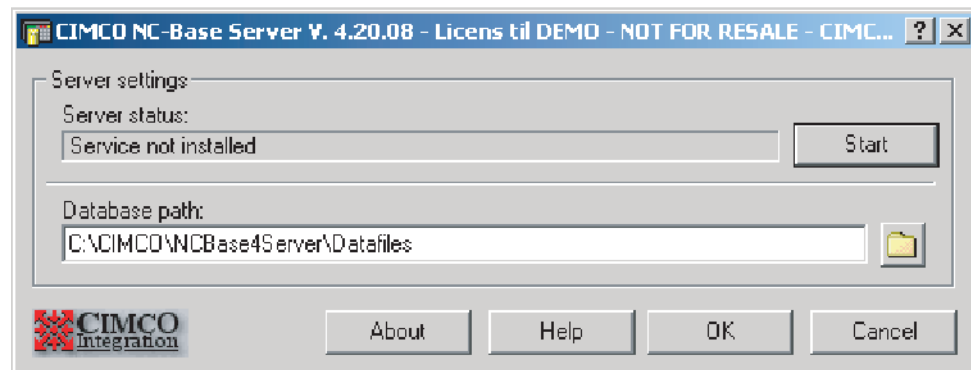
The NC-Base Database consists of three programs: the CIMCO Edit v4 editor (the fast and flexible NC editor), the NC-Base v4 client (NC-Base Explorer, the CIMCO editor optional plugin for accessing the database), and the NC-Base v4 server (no interface, runs in the background as a service).

The task of the NC-Base Server is primarily the storing of data and the actual data processing, such as searching for the individual NC programs.

(See next page)

Start the NC-Base Server Service

In the directory C:\CIMCO\NCBase4Server, double-click the program NCBaseServer.exe. The following dialog appears:



Server settings

Server status: Start the NC-Base Server Service by clicking **Start**. An 'Information' Dialog appears. Click **OK**.

Database path: Here, the path of the NC-Base datafiles is entered.

Notice: By default, the datafiles are installed in the same directory as the NCBase Server.

(See next page)

Activating the NC-Base Explorer

The NC-Base Explorer serves as user interface for the service provided by the NC-Base Server. Integrated with the CIMCO Editor, it allows input of search criteria, (graphic) display of results, and further processing of the program and of program files.

Using this interface you can perform operations such as program search, 'Add program', 'Associate files', 'Lock program', 'Backup', 'Add customer', 'Send program' to a DNC port, etc.

The NC-Base Explorer allows editing of NC programs via the CIMCO Editor, as well as modification of associated files via standard software applications.

Depending on configuration, a double click on the file is enough to start the necessary application, whereupon you can edit the file as usual.

Save the file with the command 'Save', and all changes will be recognised by the database.

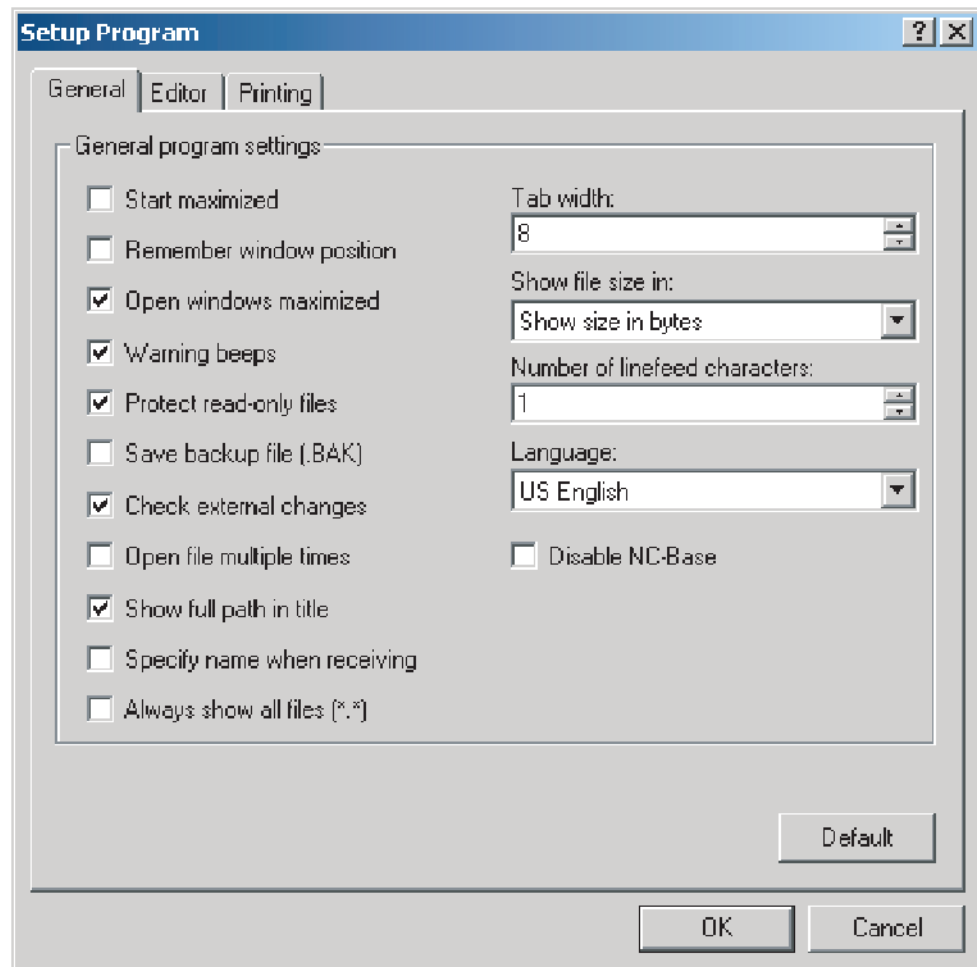
When the installation of the database is finished you can start the CIMCO NC-Base Database for the first time, double-clicking on the CIMCO icon that has appeared as a short cut on the desk top of your PC.

Before you can have direct access to the database via the NC-Base Explorer, it has to be activated:

(See next page)

Activating the NC-Base Explorer

To activate the NC-Base Explorer, in the CIMCO Edit menu bar go to **Setup, Global Setup**. The following dialog will appear:



In general

Uncheck **Disable NCBase** to activate the menu **Database** in CIMCO Edit.

The **Database** menu will appear in the menu bar the next time you start CIMCO Edit.

Further information as to functionality and settings of NC-Base is found in the enclosed on-line help.